

NEWPORT



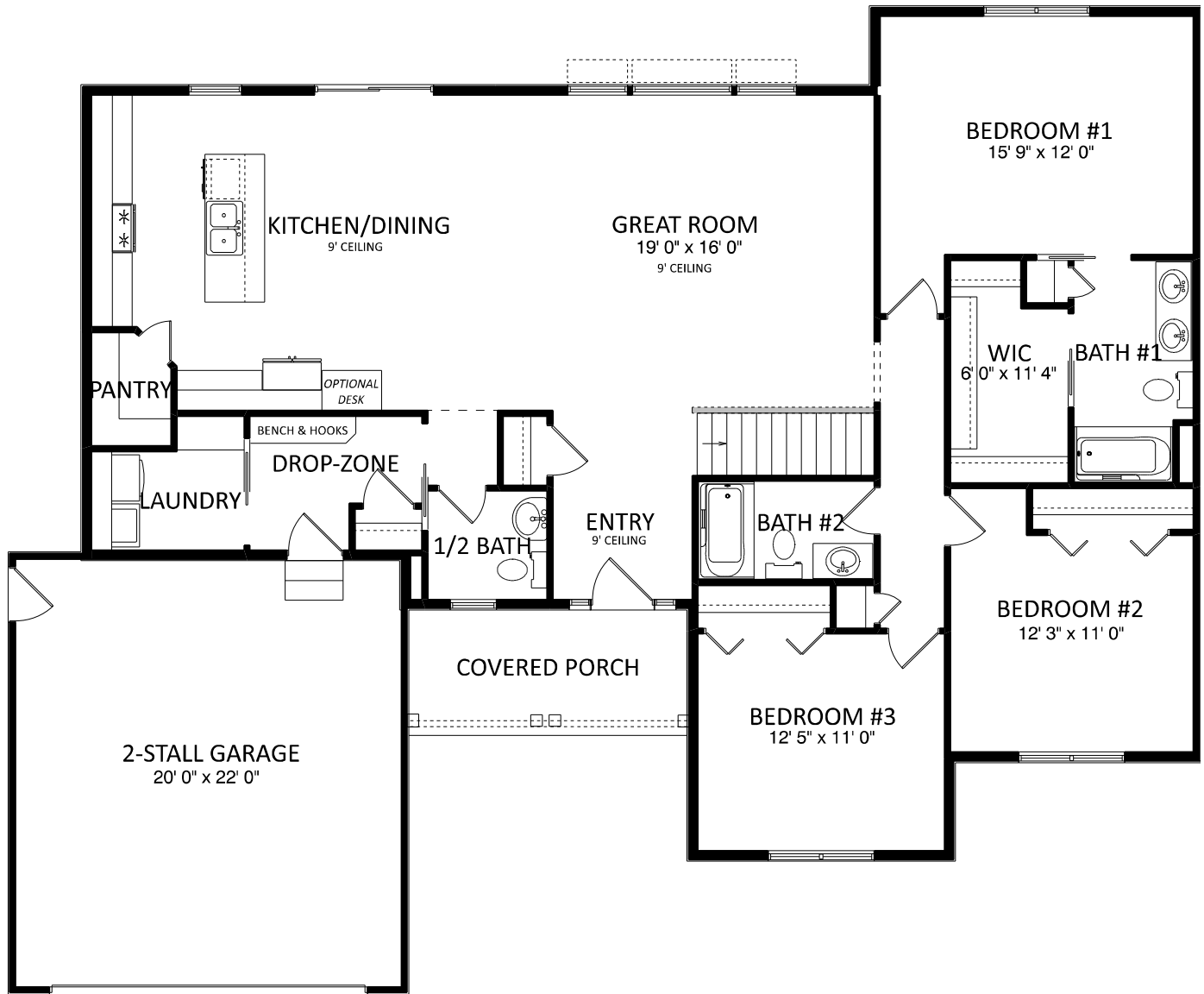
BASE ELEVATION



BASE ELEVATION WITH OPTIONS (Option FE1)
OPTIONS SHOWN: Stone Wainscot & Porch Post Bases

Plans/Elevations/Images may contain options that are not included in the base price. All dimensions shown are approximate.

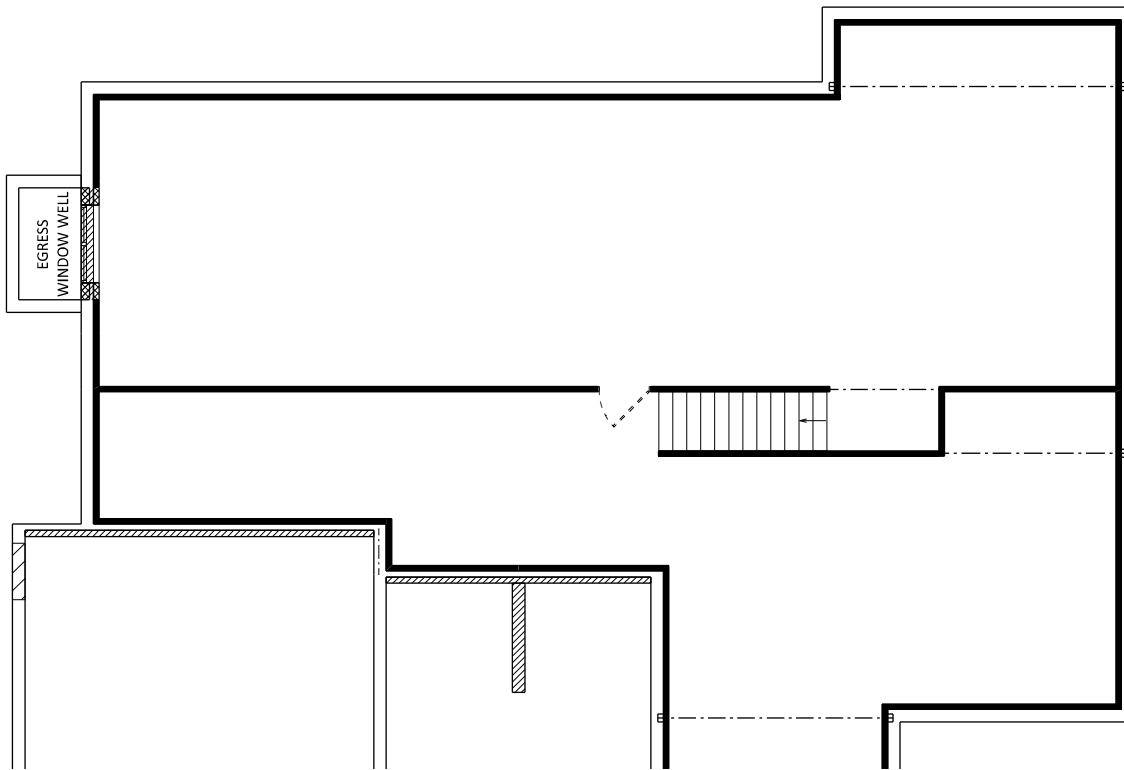
NEWPORT



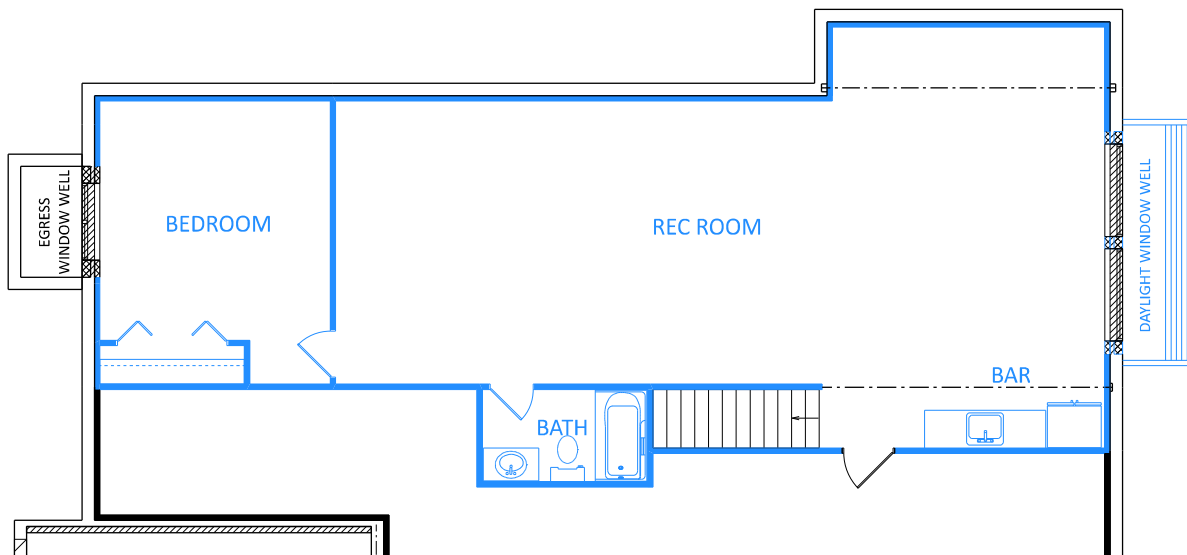
Main Floor: 1,787 ft²

Plans/Elevations/Images may contain options that are not included in the base price. All dimensions shown are approximate.

NEWPORT



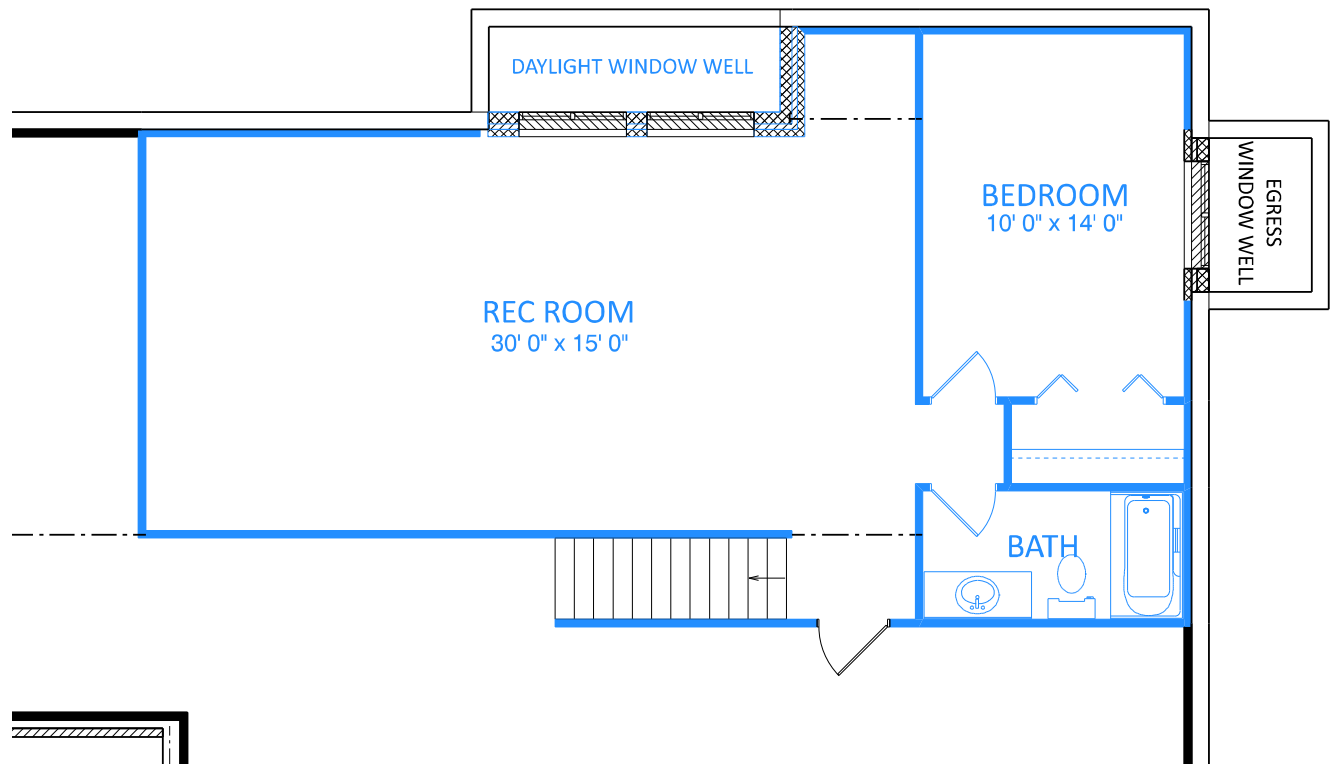
Base Foundation



Foundation Option F1 (1,041 ft²)

Plans/Elevations/Images may contain options that are not included in the base price. All dimensions shown are approximate.

NEWPORT



Foundation Option F2 (767 ft²)

Plans/Elevations/Images may contain options that are not included in the base price. All dimensions shown are approximate.