

ORCHARD



BASE ELEVATION

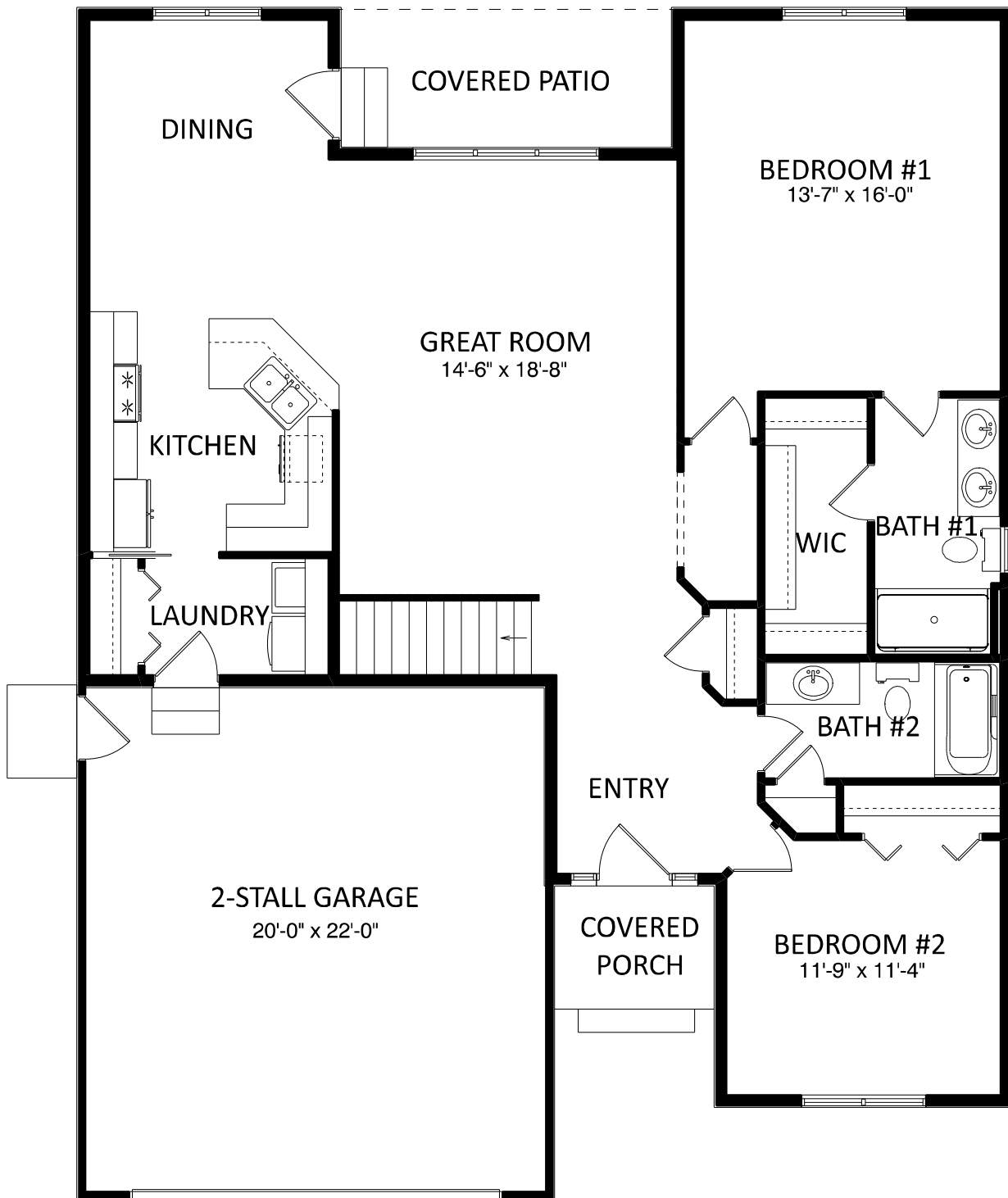


BASE ELEVATION WITH OPTIONS (Option FE1)

OPTIONS SHOWN: Stone Wainscot & Post Bases, Shake Siding, Extended Porch, Entry Gable & Transom Window

Plans/Elevations/Images may contain options that are not included in the base price. All dimensions shown are approximate.

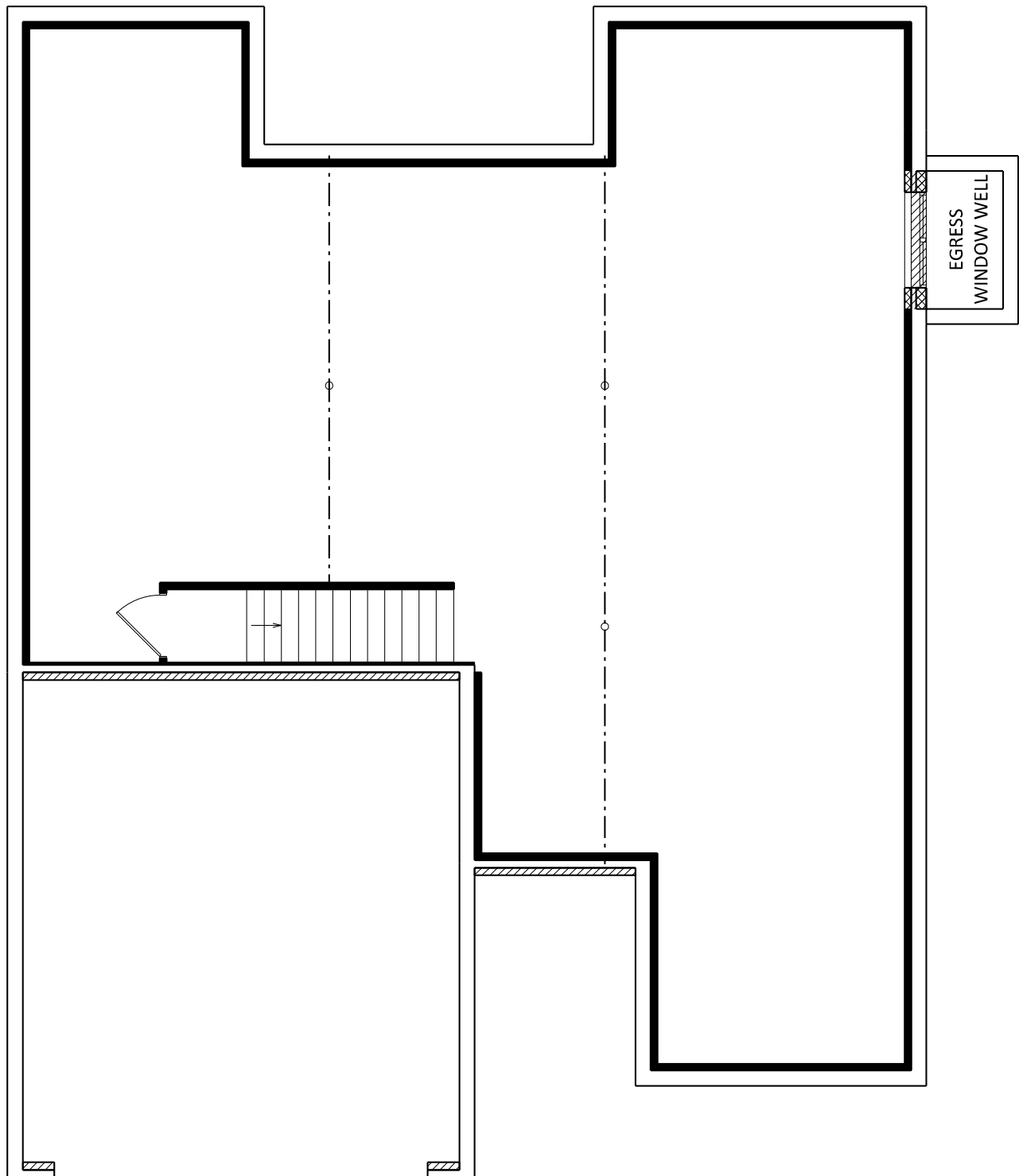
ORCHARD



Main Floor: 1,366 ft²

Plans/Elevations/Images may contain options that are not included in the base price. All dimensions shown are approximate.

ORCHARD



Base Foundation

Plans/Elevations/Images may contain options that are not included in the base price. All dimensions shown are approximate.